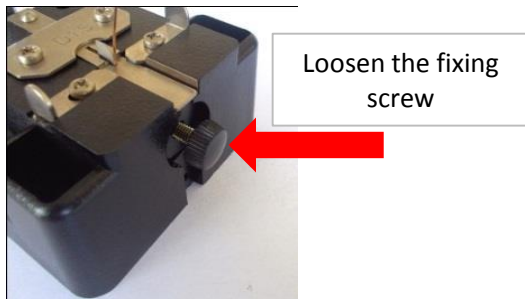
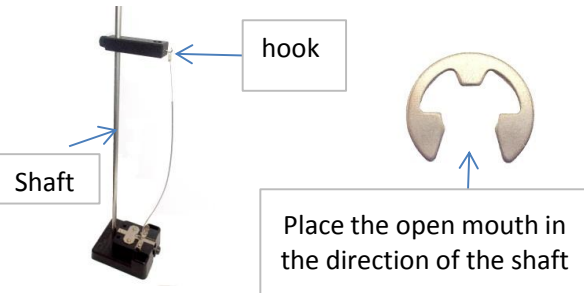


① Loosen the fixing screw

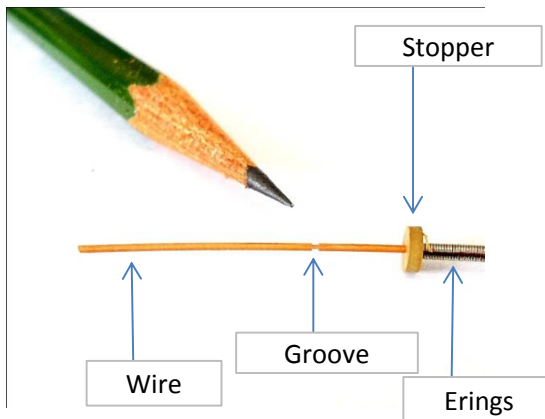


② Attach the Ering pack on the hook.



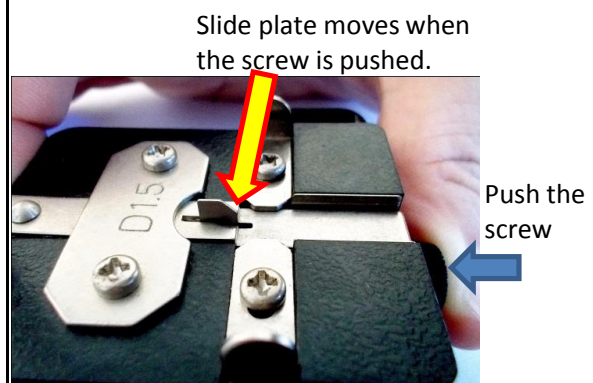
- Make sure the wire has a slack.
- Ering's open mouth should face the shaft.

③ Remove the stopper from the wire



Fix the Erings by a clip or scotch tape tentatively after the removal of the stopper

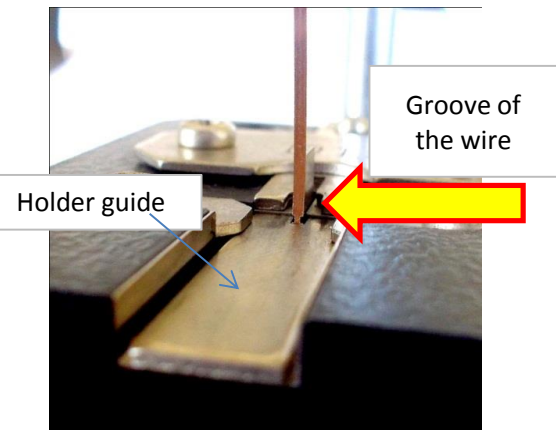
④ Push the screw to the end



⑤ Put the wire in the slot while pushing the screw.



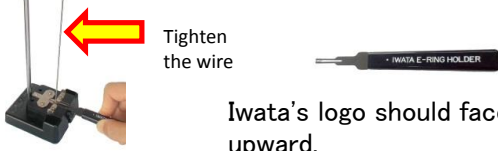
Send the wire in the slot.



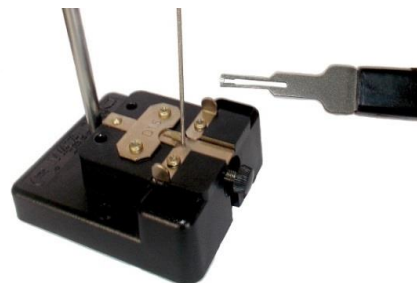
⑥ Make sure the groove of the wire is visible in alignment with the holder guide. Make sure the wire follow the slide plate when the screw is pushed.

⑦ Adjust the height to get rid of slack from the wire.

Remove the clip or tape that fixes the Erings and send the Erings to the bottom. Make sure the Ering at the bottom touches the holder guide and there is no space between the Ering and the guide.



⑧ Put the holder forward and push the Ering and the slide plate to the end.



If it does not work properly, make sure if the wire follow the slide plate or Ering's position.